



MJ420 PIPE

Instruction, tips & tricks

Thank you for choosing Herb Shuttles.

On the following pages, we have put together a clear guide with tips, tricks & hints for your new Herb Shuttles MJ420 Pipe.



Read these instructions for your new Herb Shuttles MJ420 Pipe carefully.

If you have any questions, please contact our great customer service team:
info@herb-shuttles.de

Herb Shuttles
Owner: Finn Gehlen
Auf den Conroden 38
28307 Bremen
Germany
www.herb-shuttles.de

Spezifikation:

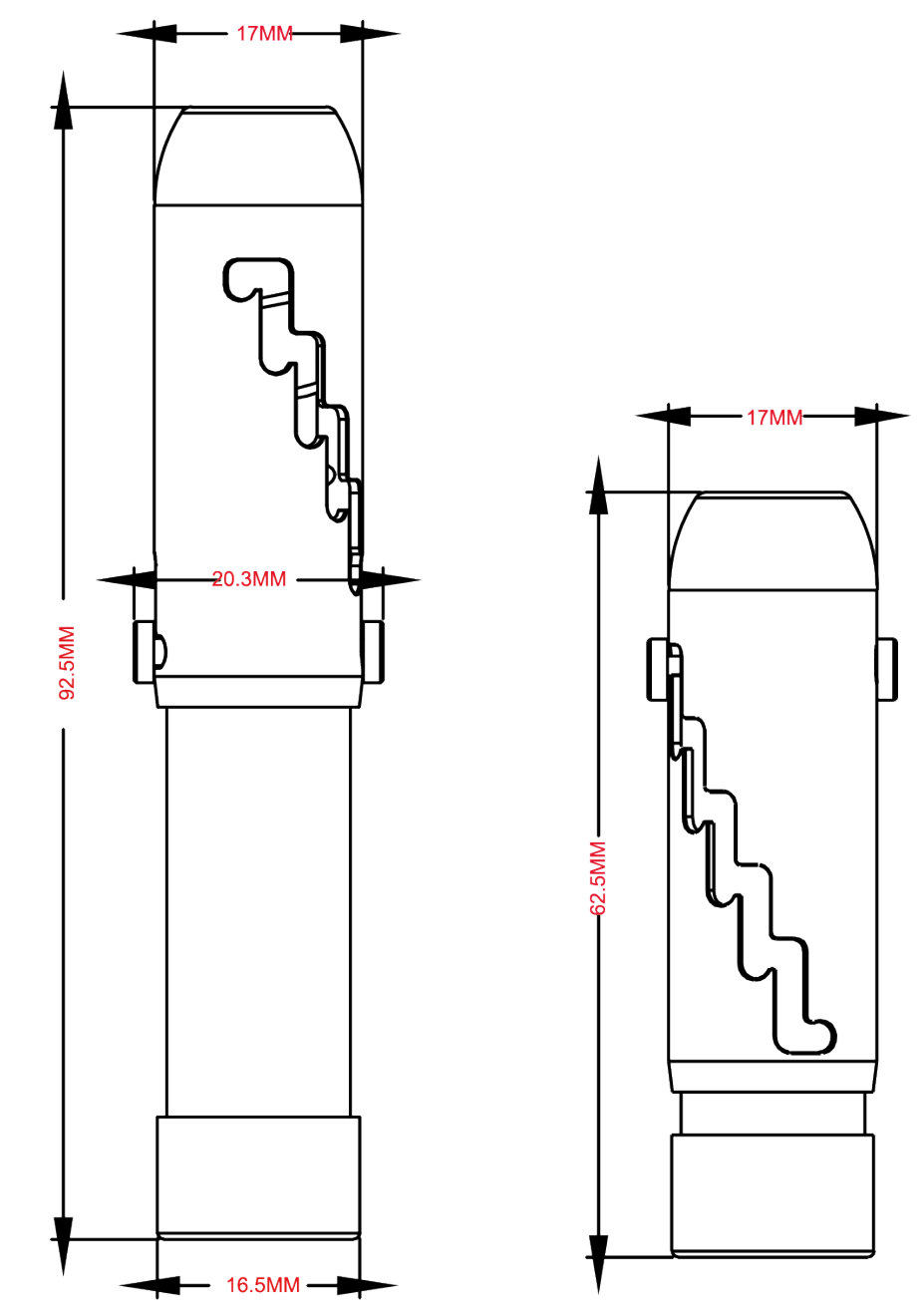
Fully retracted length: 62,5 mm

Fully extended length: 92,5 mm

Diameter of the aluminium tube: 17 mm

Maximum glass tube capacity: about 1-2 grams

Weight of the MJ420 Pipe: 35 grams



Features:

1. The pipe can be easily disassembled It is therefore easy to clean.
2. Exchangeable glass tube. If you don't feel like cleaning the glass tube immediately after smoking, you can simply take a new one. You can find a supply of replacement glasses for a fair price at: www.herb-shuttles.de
3. The pipe can be easily extinguished by putting on the silicone cap.
4. Technically ingenious construction. Burns the herbs slowly and sparingly and cools the smoke on its way into the mouth.

How to use the Herb Shuttles MJ420 Pipe

Step 1

Remove the silicone cap and pour the crushed herbs directly into the glass tube. Put the silicone cap back on and adjust the screw caps to a higher lever to compress the herbs. This prevents them from falling out when smoking and the pipe burns evenly. Put the glass tube back slightly upwards after compressing it, this will give you an even better smoking experience.

Step 2

Remove the silicone cap and light the pipe for smoking.
Adjust the screw caps of the MJ420 pipe to drop the ash out of the glass tube.

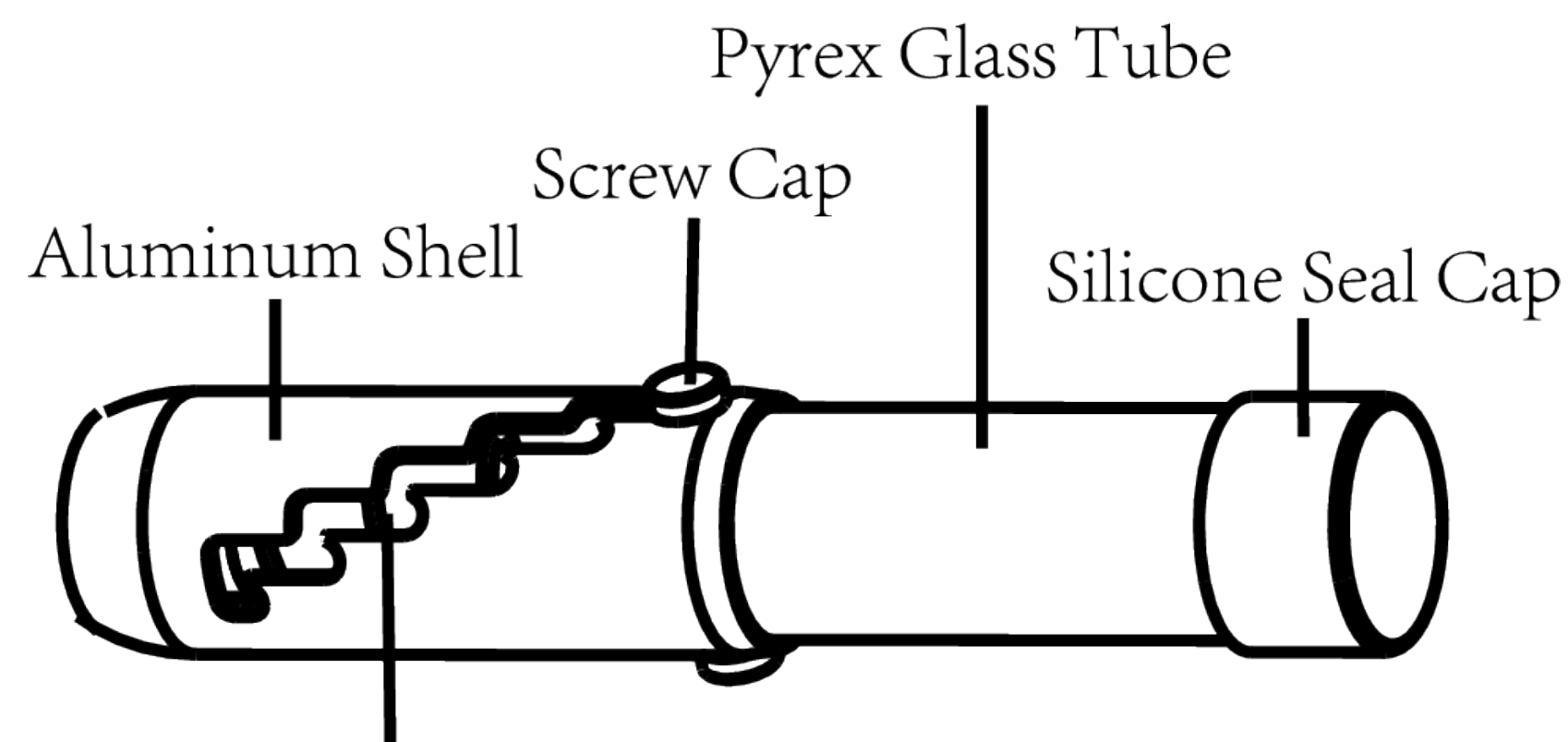
Step 3

After smoking up, adjust the screw caps to the highest level so the glass tube can be cleared out thoroughly. Put the silicone cap back on and you are good to go.

Attention! The glass is very hot when smoking. Let it cool down after use before touching the glass tube or putting it in your pocket.

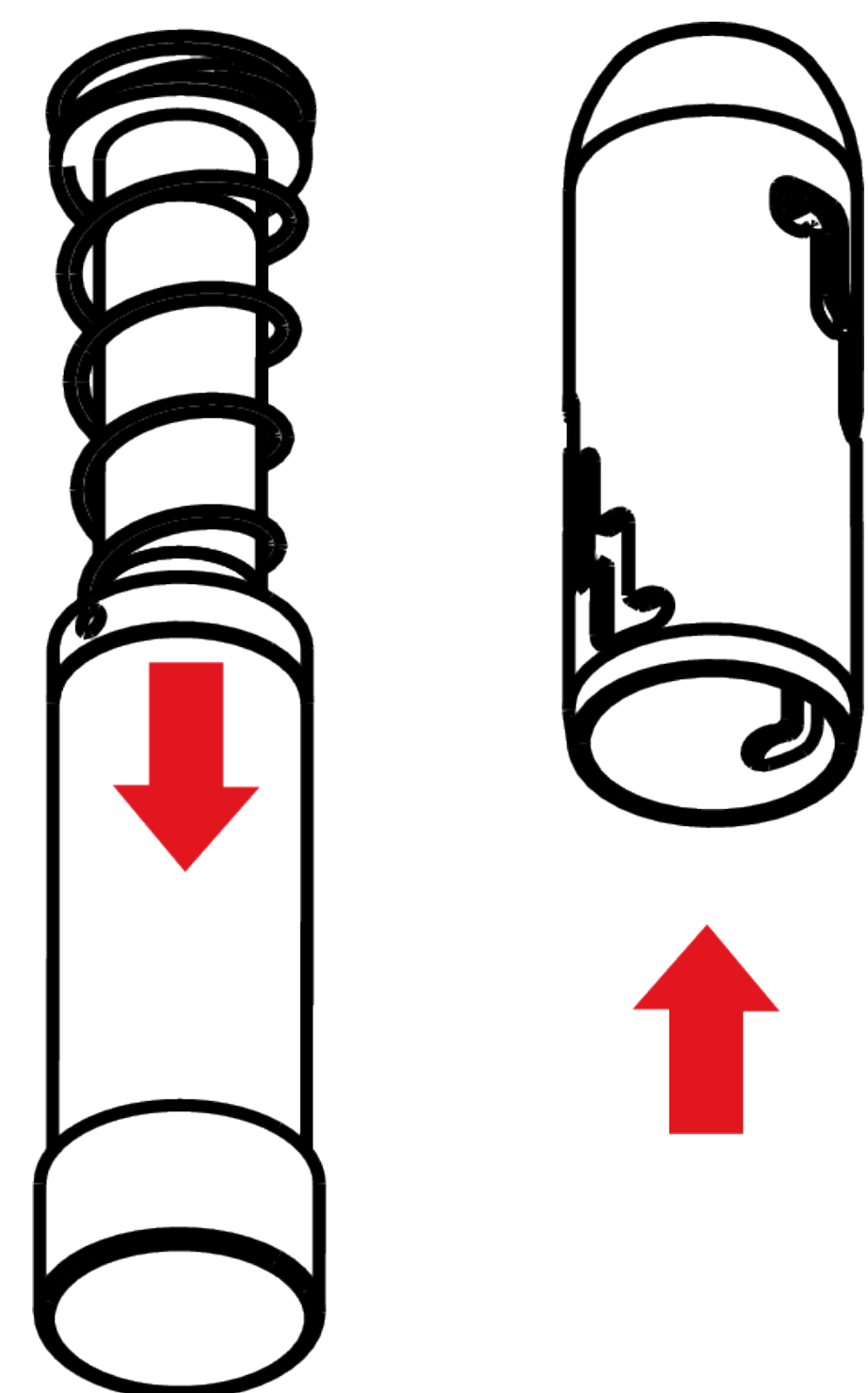
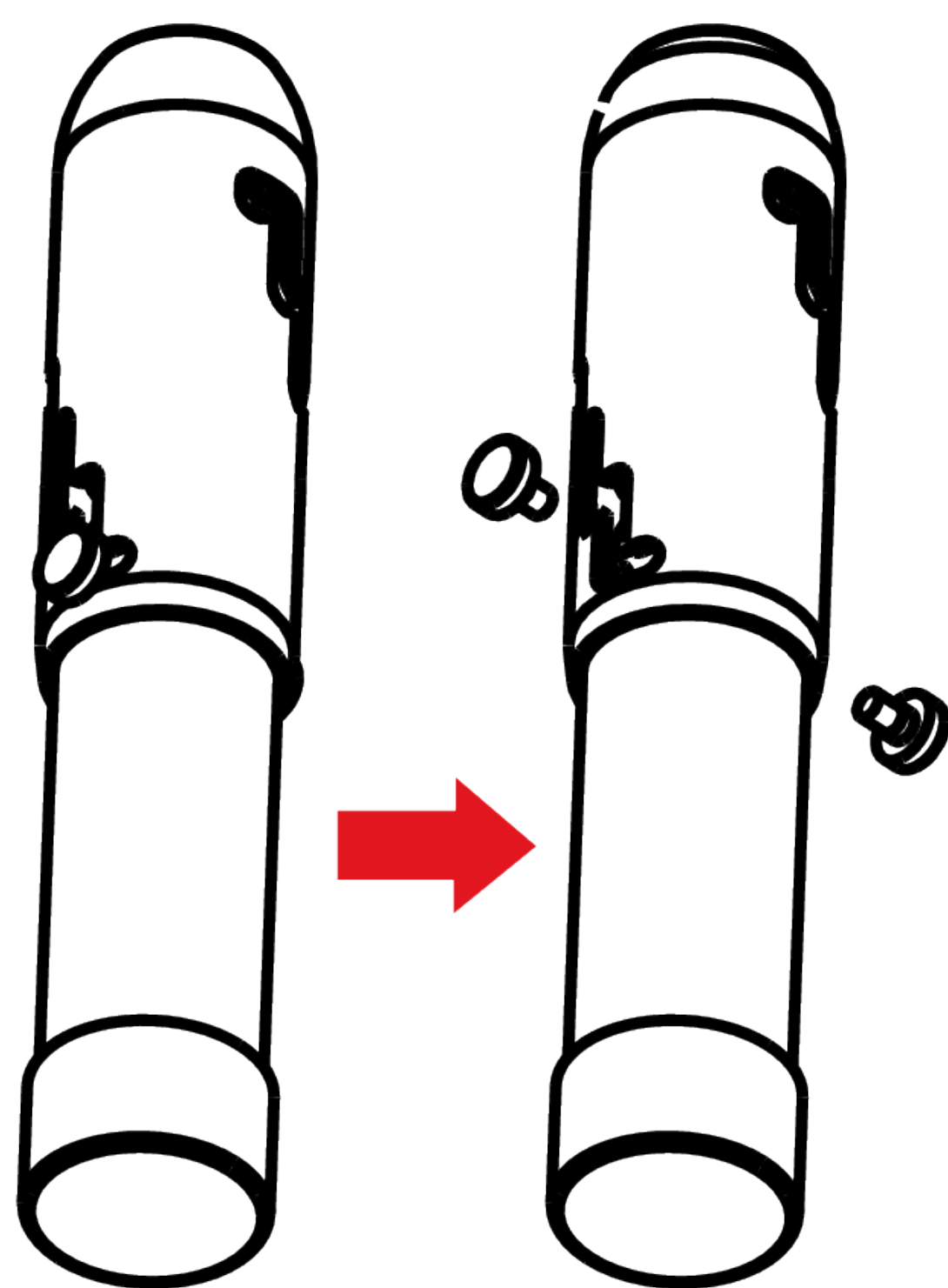
How to clean and disassemble your Herb Shuttles MJ420 Pipe

The individual parts of the MJ420 Pipe:



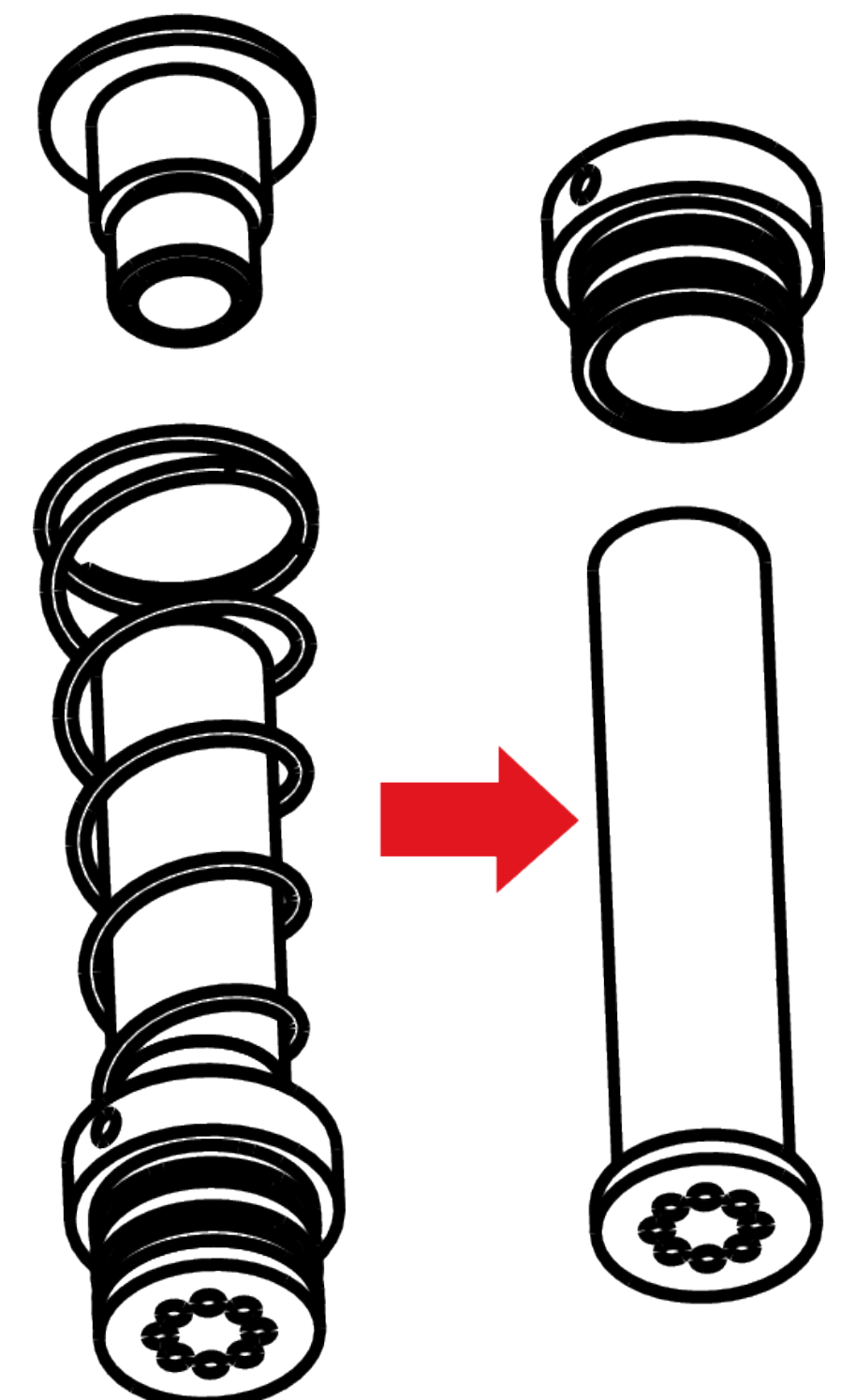
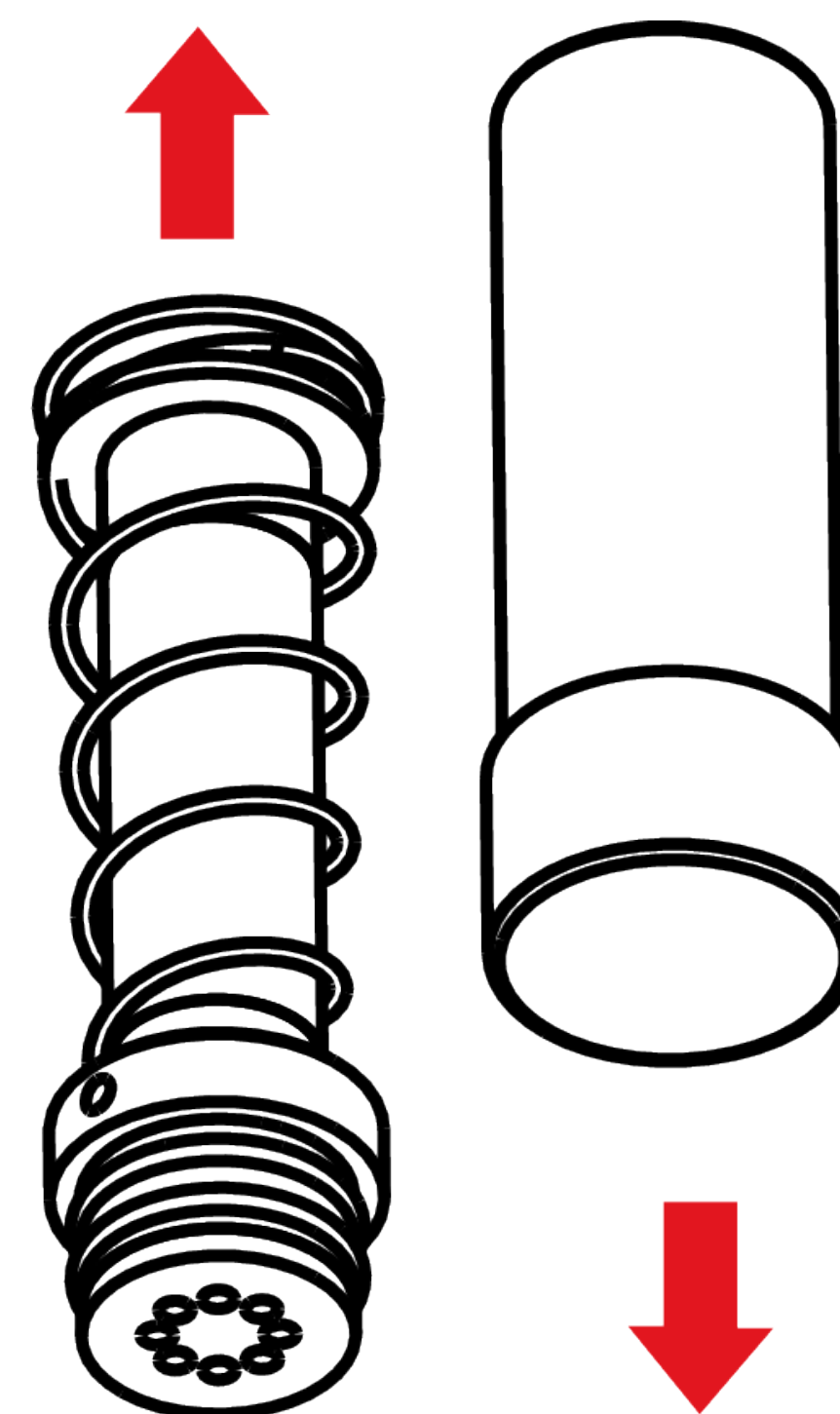
This is how you disassemble the pipe:

1. Adjust the screw caps to the lowest level during disassembly. This will release the spring and both screws can be unscrewed.



2. Pull the aluminum shell apart from the rest parts.

3. Now you can remove the glass tube. The glass tube sits on a rubber seal. Important: Pull the glass tube straight and with a slight turning movement. This prevents it from breaking.



4. Screw off the top thread stopper and slide the spring and tube holder out. All parts disassembled are easy and convenient to clean.

Cleaning:

Cleaning the MJ420 Pipe is very easy. It works best in a warm water bath, with skin-friendly washing-up liquid. You can now clean the individual parts with the supplied brush.

The glass tube can be cleaned with bong/pipe cleaner.

Attention! The metal parts of the pipe do not belong in the dishwasher. The salts can attack the pipe's alloy and damage it. The same applies to chemical bong/pipe cleaners, these attack the paint.

The glass pipe and the cleaning brush can be put in the dishwasher. However, you must make sure that they are safely placed in the dishwasher. The glass pipe and brush are very light, the water jet has the power to make them fly around. You do not want to find broken glass & the brush in the drain.

And reassemble:

It's the same as disassembling, only the other way round ;-)

Notes:

Be careful to not break the glass tube. Always remove the glass tube with a piece of textile. Pull the glass tube straight and with a slight turning movement. This prevents leverage and the glass from breaking.

If the glass breaks, please write us a message with your order number.

Only suitable for adults. Please consult your doctor if you are unsure about its use.

For domestic use only. Keep the product out of the reach of children. Small parts!

Do not touch the glass after and during use. May cause burns.

Our great customer service will be happy to help you with any questions or problems. e-mail: info@herb-shuttles.de

Tip #1

MJ420 Pipe + activated charcoal filters
Did you know that the MJ420 Pipe is compatible with PURIZE XTRA Slim Size charcoal filters (5,9mm)?

Activated charcoal can filter a large proportion of the pollutants from smoke.

Try it out for an ultimate smoking experience!

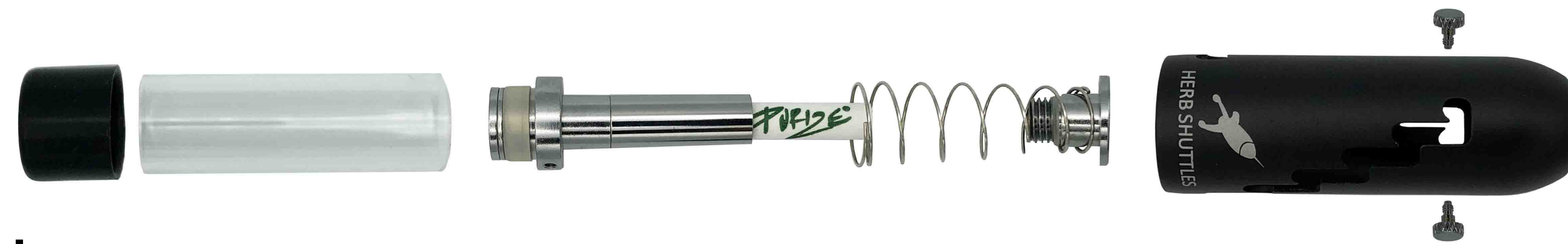
Disassemble the MJ420 Pipe and insert an activated carbon filter into the draft.

Alternatively you can also use loose activated carbon, fill the draft about half way full.

We can recommend the products of PURIZE to you. You can find them in our attractive online headshop at: www.herb-shuttles.de/shop

Put an activated charcoal filter into the draft

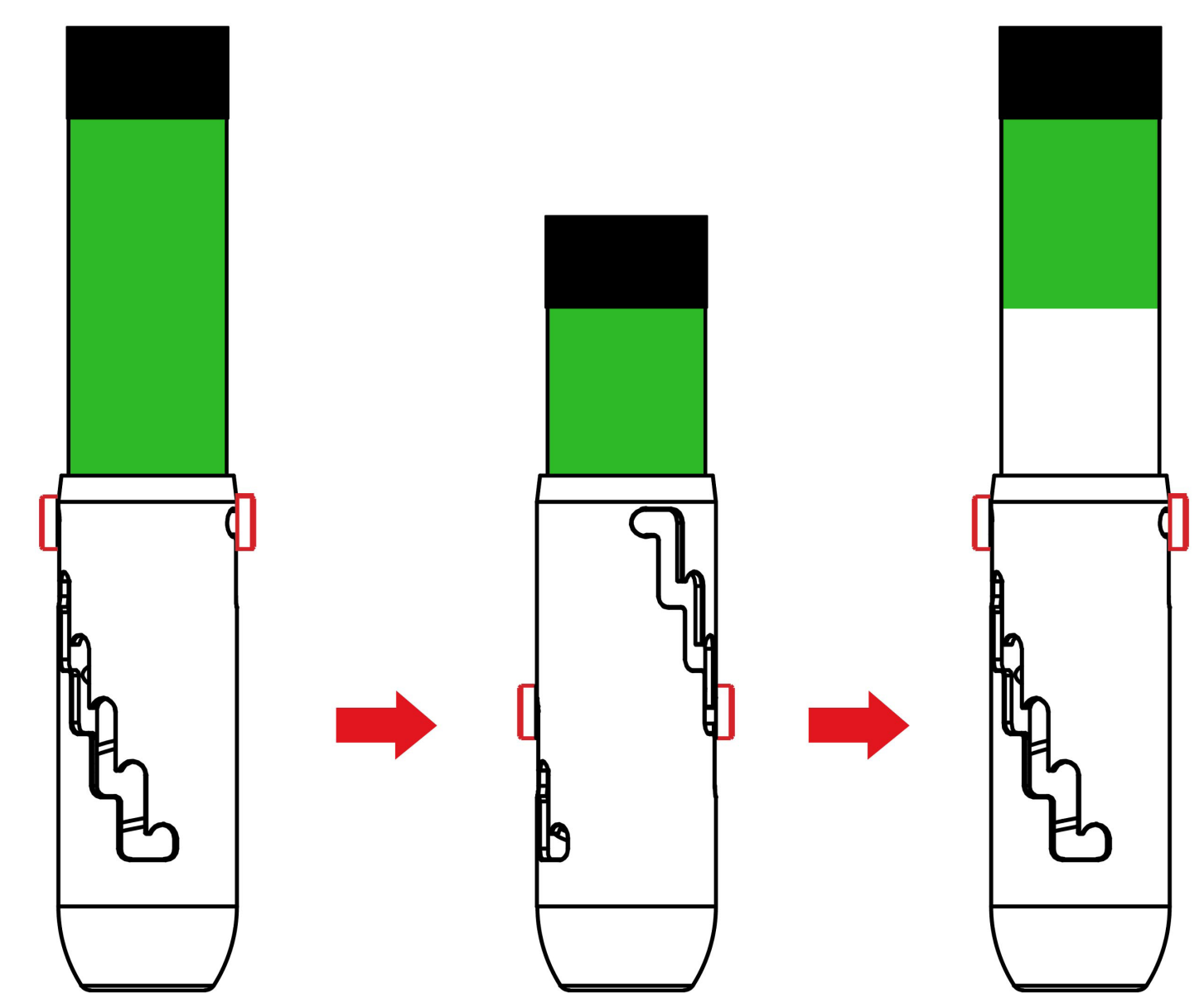
Screwed on, put in, assembled.
Pure pleasure!



Tip #2

You should always compress the herbs a little before smoking. Fill the MJ420 with your favourite herbs, put the silicone cap on the glass and turn it clockwise. This compresses the material a little, which makes it sit firmly in the glass and let it burn evenly and sparingly.

Pro-tip: After compressing it, you can extend the MJ420 to create an air chamber between the herbs and the filter. This pushes the smoke feeling up again. Definitely try it out.



Tip #3

The Herb Shuttles MJ420 Pipe for new friendships

The MJ420 Pipe not only catches many glances, it is also the perfect ice breaker. We have often heard from our customers that the MJ420, with its interesting design, is the reason for conversations and new friendships.

Tip #4

You do not need to fill the MJ420 Pipe completely. Just fill it with the desired amount. Also works with small quantities. Do not forget to compress! Komprimieren nicht vergessen!

The Herb Shuttles MJ420 Pipe is a quality product which will accompany you for a long time. We hope that you will experience a lot with it.

Now I wish you a lot of fun with your new product from Herb Shuttles!

Finn Gehlen

Owner of Herb Shuttles

Fan-Love ♥

Instagram: tag

@herb.shuttles.de

for reposts.

We are very much pleased to receive your feedback!

The best headshop in the universe!

You will find replacement glasses and many other products at:

www.herb-shuttles.de

You should also check us out, for nice content around your favourite herb.

You have questions about products?

Contact us:

info@herb-shuttles.de